

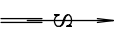
K.O. LASTOVO MBR 316717
PREDEL: PEVOR - LUČICA
KAT. PLAN BR. 19.

SKICA IZMJERE
M 1:500
LIST 3



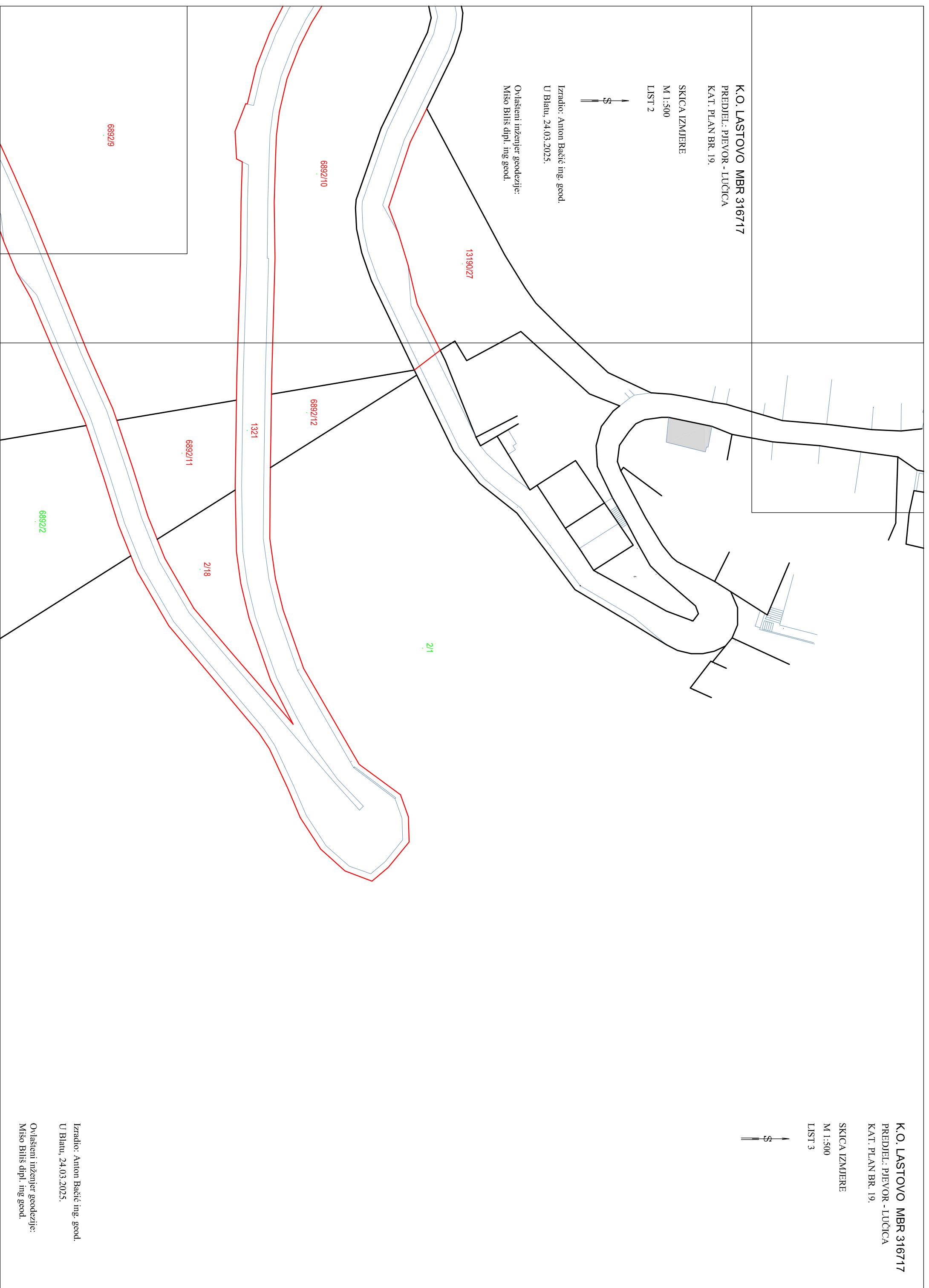
K.O. LASTOVO MBR 316717
PREDEL: PEVOR - LUČICA
KAT. PLAN BR. 19.

SKICA IZMJERE
M 1:500
LIST 2



Izdadio: Anton Bačić ing. geod.
U Blatu, 24.03.2025.

Ovlašteni inženjer geodezije:
Mišo Biliš dipl. ing. geod.



Izdadio: Anton Bačić ing. geod.
U Blatu, 24.03.2025.

Ovlašteni inženjer geodezije:
Mišo Biliš dipl. ing. geod.